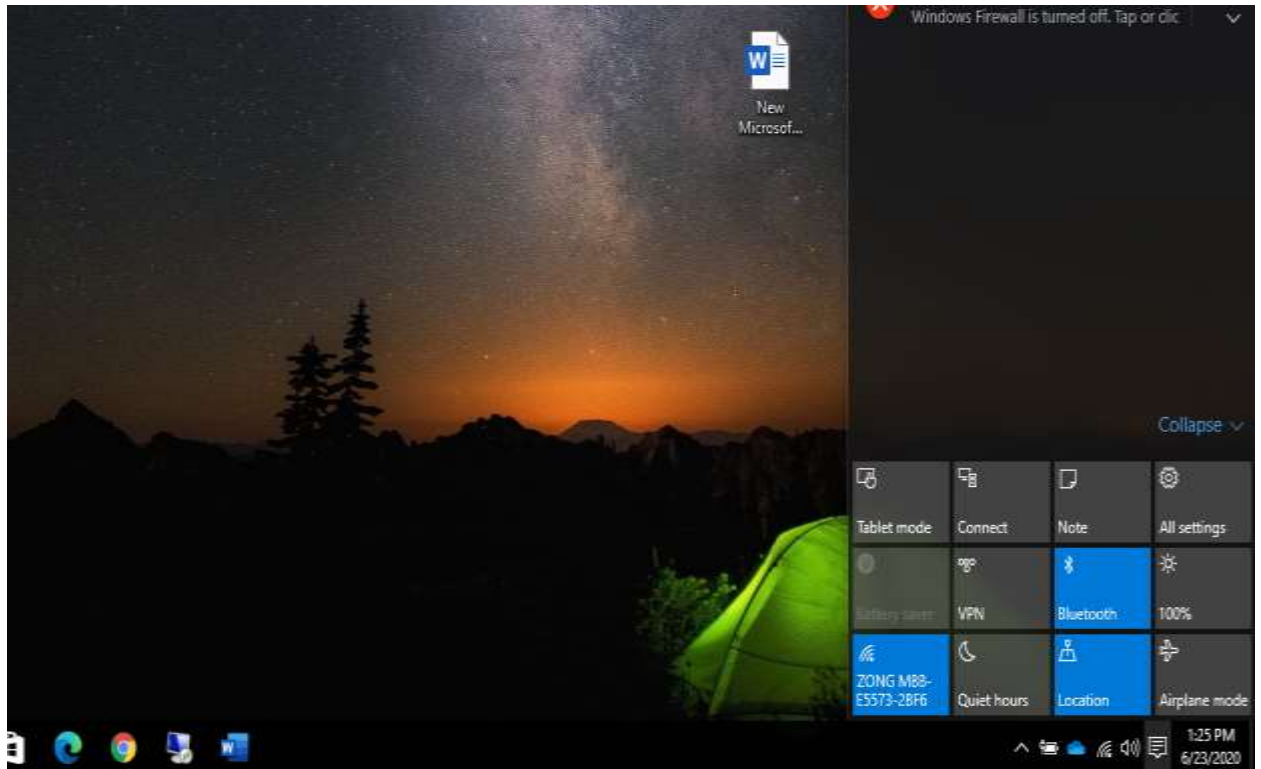
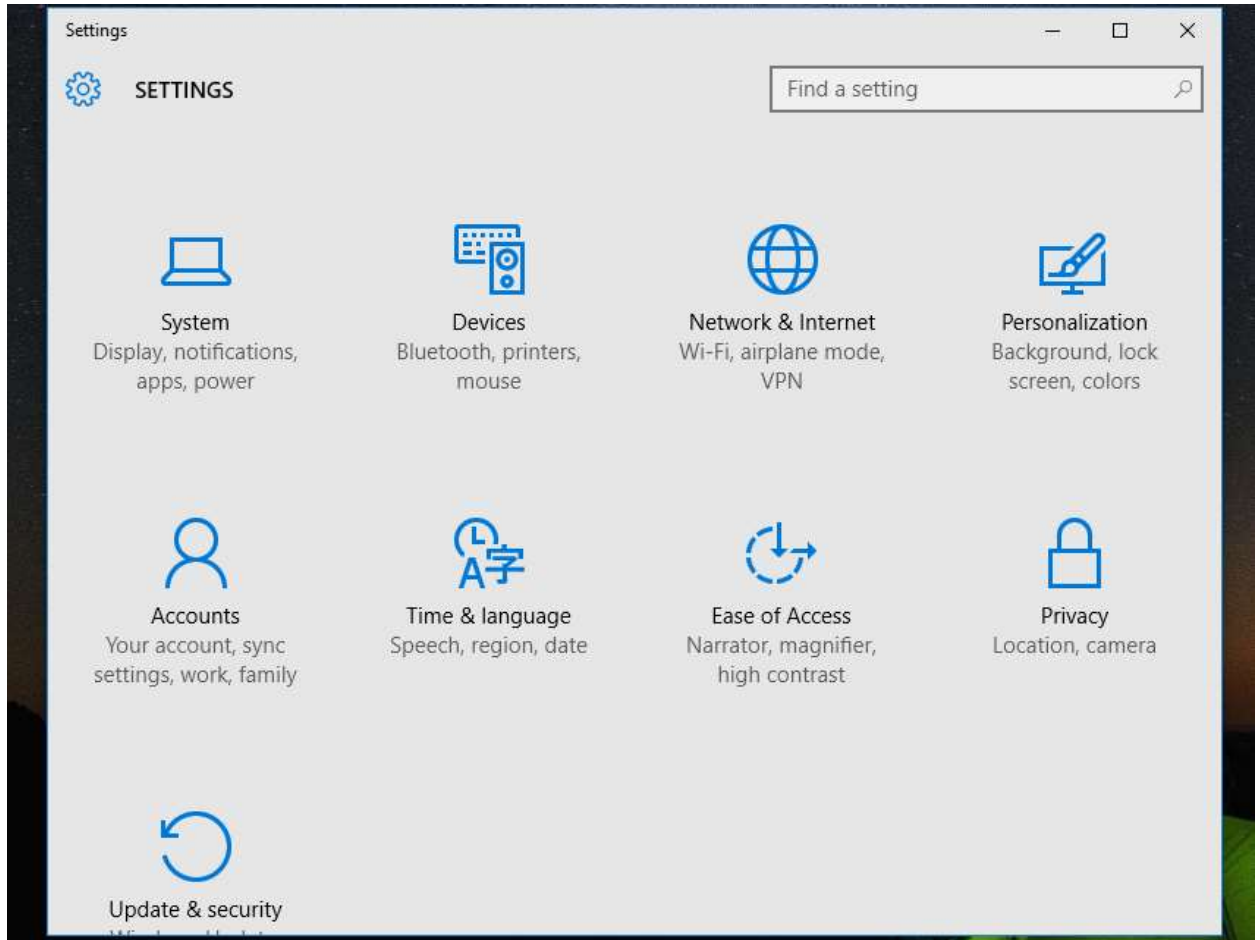


This is Guide for Setup VPN Connection in Windows 10 For MUET SZAB Campus Khairpur Mir's.

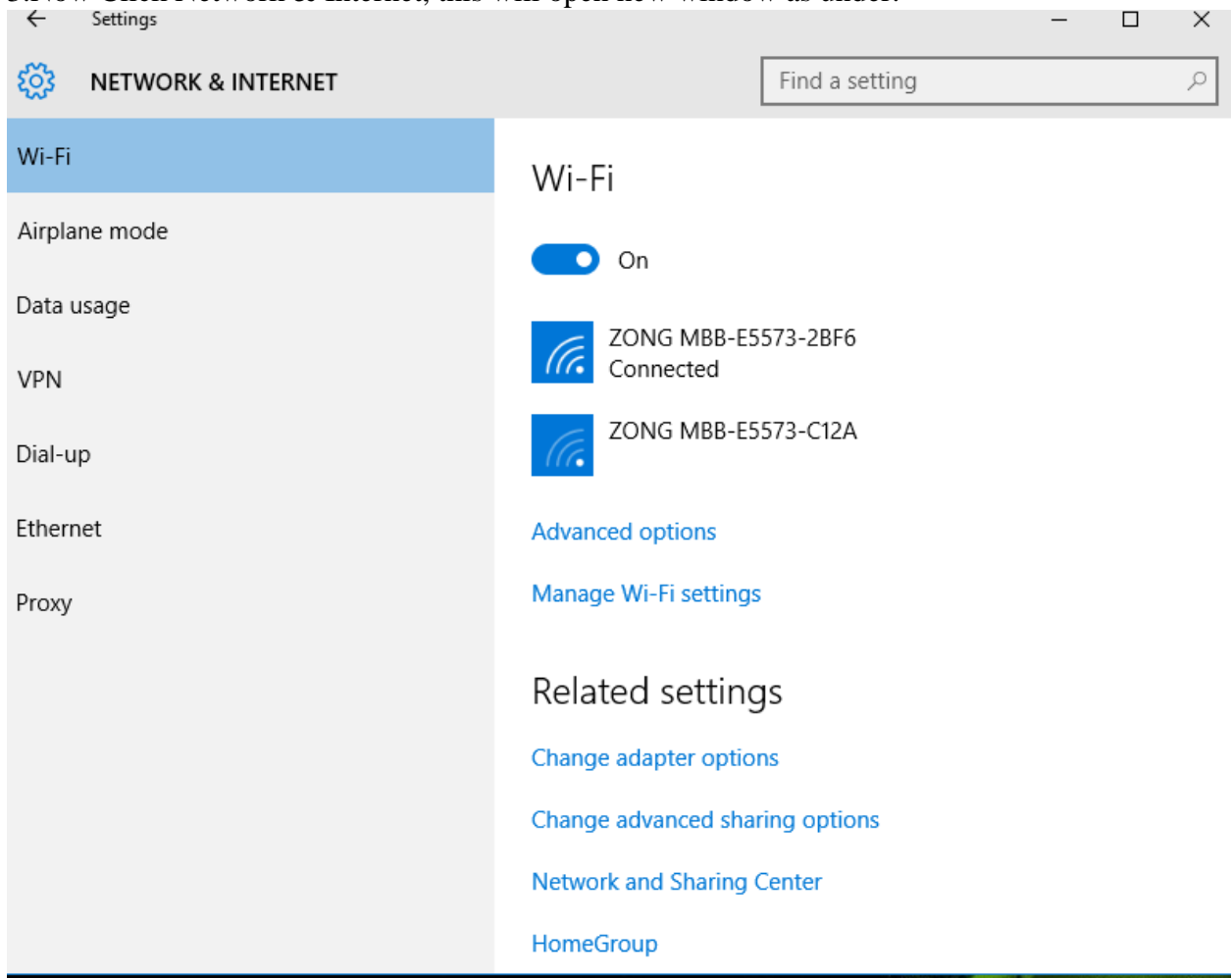
1. Click on notification Tab of Taskbar, it will open new pop window as under:



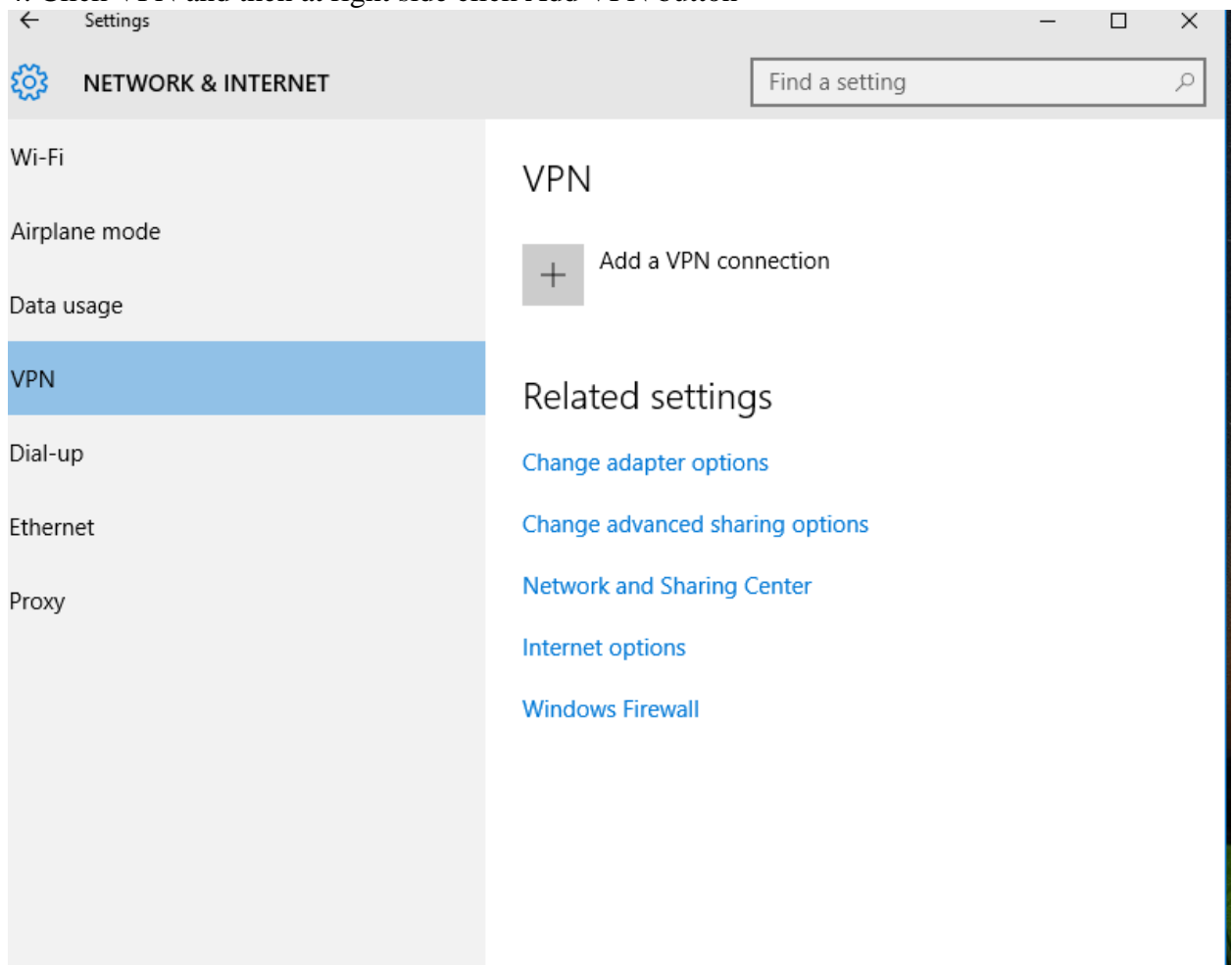
2. Click on All Setting, this will open new window as under:



3. Now Click Network & Internet, this will open new window as under:



4. Click VPN and then at right side click Add VPN button



5. When you click Add VPN connection, new window will open

The image shows a Windows dialog box titled "Add a VPN connection". The dialog is set against a solid blue background. At the top, the title "Add a VPN connection" is displayed in white text. Below the title, there are five main sections, each with a label and an input field:

- VPN provider:** A light blue dropdown menu with a small downward arrow on the right side.
- Connection name:** A light blue text input field.
- Server name or address:** A light blue text input field.
- Type of sign-in info:** A dark blue dropdown menu with the text "User name and password" and a small downward arrow on the right side.
- User name (optional):** A dark blue text input field.

At the bottom right of the dialog, there are two buttons: "Save" and "Cancel". Both buttons have a white border and are set against the blue background.

6. Fill above window, in VPN provider select Windows built-in and fill other options as under:

**Add a VPN connection**

VPN provider  
Windows (built-in) ▾

Connection name  
MUETSZABCampus

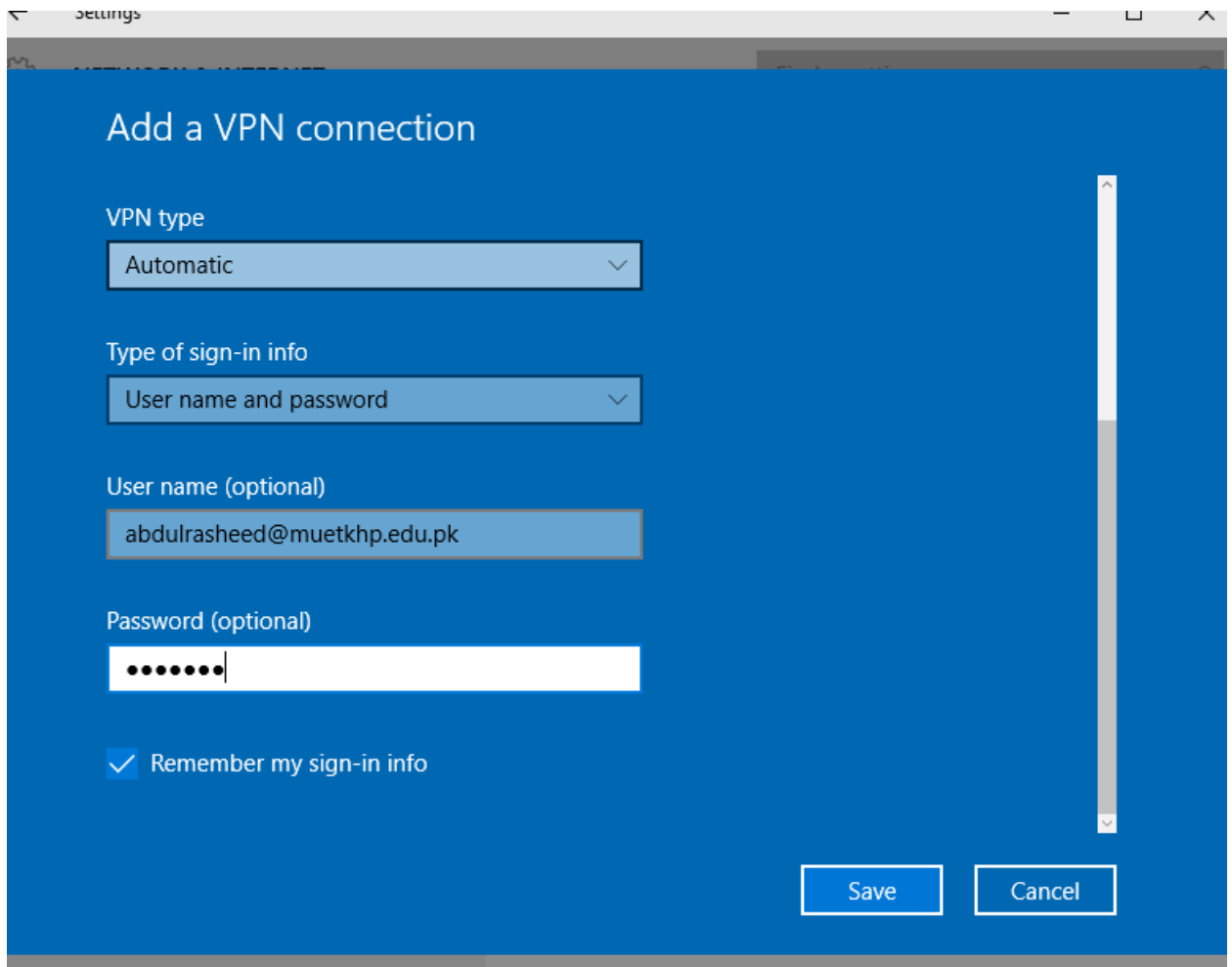
Server name or address  
121.52.155.178

VPN type  
Automatic ▾

Type of sign-in info  
User name and password ▾

Save Cancel

7. Scroll down to Give User and password, **enter your user and password which you use to access at internet at MUET SZAB Campus Khairpur Mir's**, do not enter here your GSuite email address or office 365 account.



The image shows a Windows Settings window titled "Add a VPN connection". The window has a blue background and contains the following fields and options:

- VPN type:** A dropdown menu with "Automatic" selected.
- Type of sign-in info:** A dropdown menu with "User name and password" selected.
- User name (optional):** A text input field containing "abdulrasheed@muetkhp.edu.pk".
- Password (optional):** A password input field with seven dots representing the password.
- Remember my sign-in info:** A checked checkbox.
- Buttons:** "Save" and "Cancel" buttons at the bottom right.

8. Click Save, now you can connect VPN.

